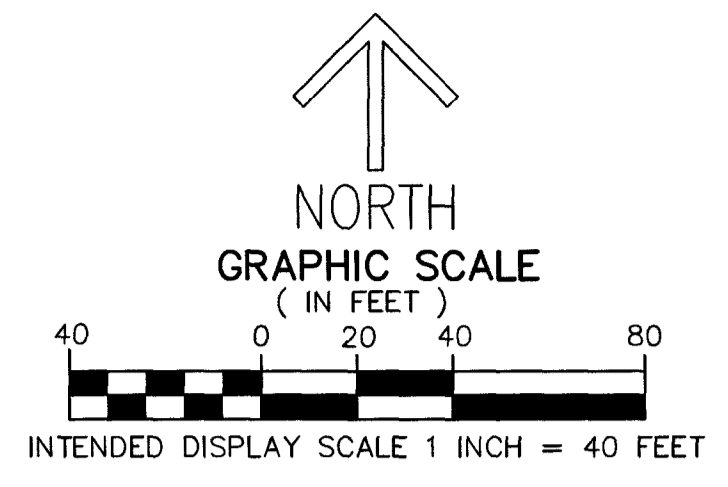


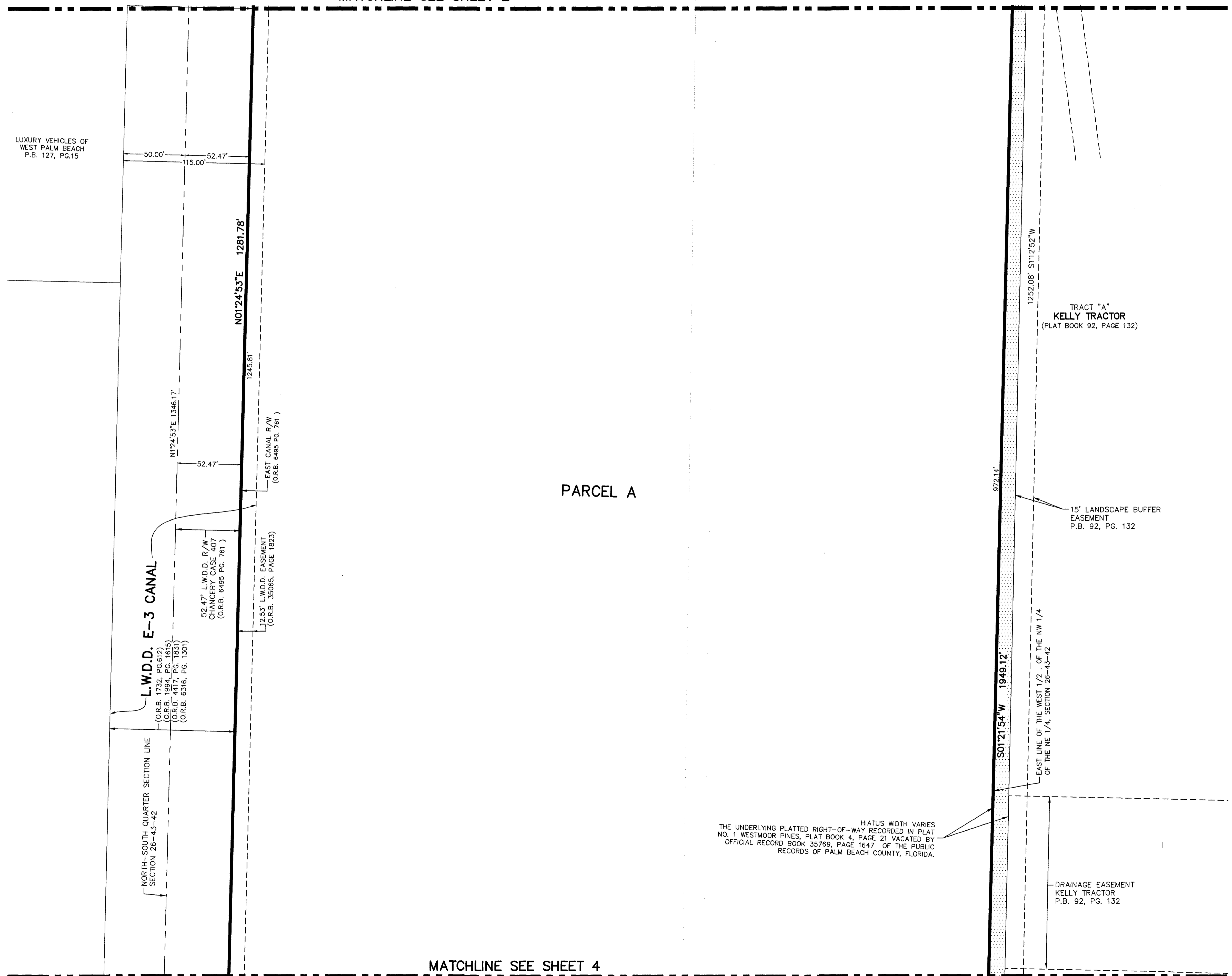
# FOUNT MUPD

A PORTION OF THE NORTHEAST QUARTER OF SECTION 26,  
TOWNSHIP 43 SOUTH, RANGE 42 EAST, PALM BEACH COUNTY, FLORIDA

THIS INSTRUMENT PREPARED BY  
DAVID P. LINDLEY  
OF  
**CAULFIELD and WHEELER, INC.**  
SURVEYORS - ENGINEERS - PLANNERS  
7900 GLADES ROAD, SUITE 100  
BOCA RATON, FLORIDA 33434 - (561)392-1991  
CERTIFICATE OF AUTHORIZATION NO. LB3591



MATCHLINE SEE SHEET 2



LUXURY VEHICLES OF  
WEST PALM BEACH  
P.B. 127, PG.15

TRACT "A"  
KELLY TRACTOR  
(PLAT BOOK 92, PAGE 132)

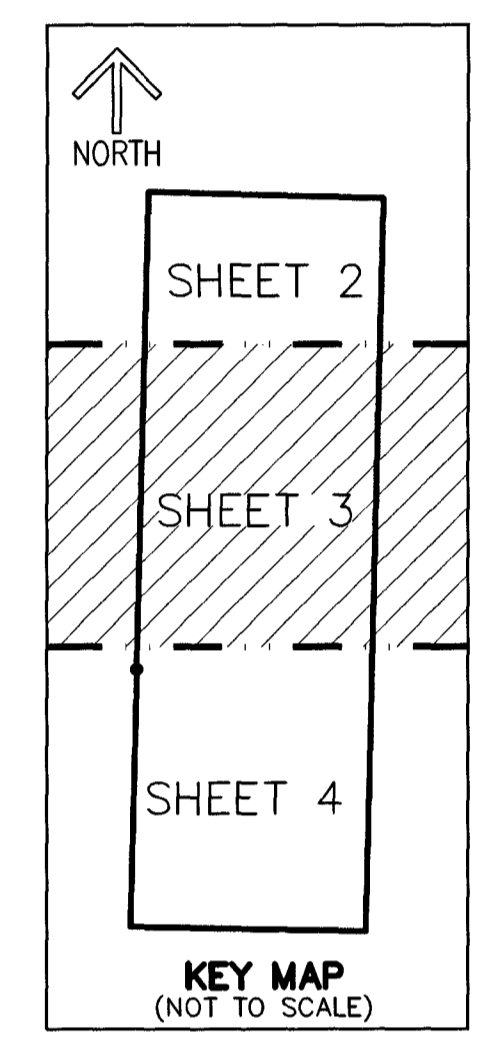
PARCEL A

15' LANDSCAPE BUFFER  
EASEMENT  
P.B. 92, PG. 132

HIATUS WIDTH VARIES  
THE UNDERLYING PLATTED RIGHT-OF-WAY RECORDED IN PLAT  
NO. 1 WESTMOOR PINES, PLAT BOOK 4, PAGE 21 VACATED BY  
OFFICIAL RECORD BOOK 35789, PAGE 1647 OF THE PUBLIC  
RECORDS OF PALM BEACH COUNTY, FLORIDA.

DRAINAGE EASEMENT  
KELLY TRACTOR  
P.B. 92, PG. 132

MATCHLINE SEE SHEET 4



- LEGEND/ABBREVIATIONS**
- CL - CENTERLINE
  - Δ - DELTA (CENTRAL ANGLE)
  - CB - CHORD BEARING
  - CD - CHORD DISTANCE
  - DE - DRAINAGE EASEMENT
  - E - EASTING (WHEN USED WITH COORDINATES)
  - F.D.O.T. - FLORIDA DEPARTMENT OF TRANSPORTATION
  - L - ARC LENGTH
  - LAE - LIMITED ACCESS EASEMENT
  - LBE - LANDSCAPE BUFFER EASEMENT
  - P.B. - PLAT BOOK
  - PG. - PAGE
  - P.B.C. - PALM BEACH COUNTY
  - LBE - LANDSCAPE BUFFER EASEMENT
  - L.W.D.D. - LAKE WORTH DRAINAGE DISTRICT
  - MUPD - MIXED USE PLANNED DEVELOPMENT
  - N - NORTHING (WHEN USED WITH COORDINATES)
  - O.R.B. - OFFICIAL RECORD BOOK
  - PBCUE - PALM BEACH COUNTY UTILITY EASEMENT
  - PC - POINT OF CURVATURE
  - PI - POINT OF INTERSECTION
  - PT - POINT OF TANGENCY
  - PNT - POINT OF NON-TANGENCY
  - R - RADIUS
  - R/W - RIGHT-OF-WAY
  - UE - UTILITY EASEMENT
  - PRM ■ - DENOTES SET PERMANENT REFERENCE MONUMENT  
4" x 4" x 24" CONCRETE MONUMENT WITH  
ALUMINUM DISK STAMPED "C&W PRM LB#3591"  
UNLESS OTHERWISE NOTED
  - - DENOTES SET IRON ROD AND CAP  
STAMPED LB#3591
  - SND ● - DENOTES SET NAIL AND DISK  
STAMPED "C&W PRM LB3591"
  - ▲ - DENOTES SET PERMANENT REFERENCE  
MONUMENT NAIL AND DISC STAMPED  
"PRM" LB#3591

- NOTES**  
**COORDINATES, BEARINGS AND DISTANCES**
- COORDINATES SHOWN ARE GRID
  - DATUM = NAD 83 (1990 ADJUSTMENT)
  - ZONE = FLORIDA EAST
  - LINEAR UNIT = US SURVEY FEET
  - COORDINATE SYSTEM 1983 STATE PLANE
  - TRANSVERSE MERCATOR PROJECTION
  - ALL DISTANCES ARE GROUND UNLESS OTHERWISE NOTED
  - SCALE FACTOR = 1.0000342
  - GROUND DISTANCE X SCALE FACTOR = GRID DISTANCE
  - BEARINGS AS SHOWN HEREON ARE GRID DATUM,  
NAD 83 (1990 ADJUSTMENT), FLORIDA EAST ZONE.